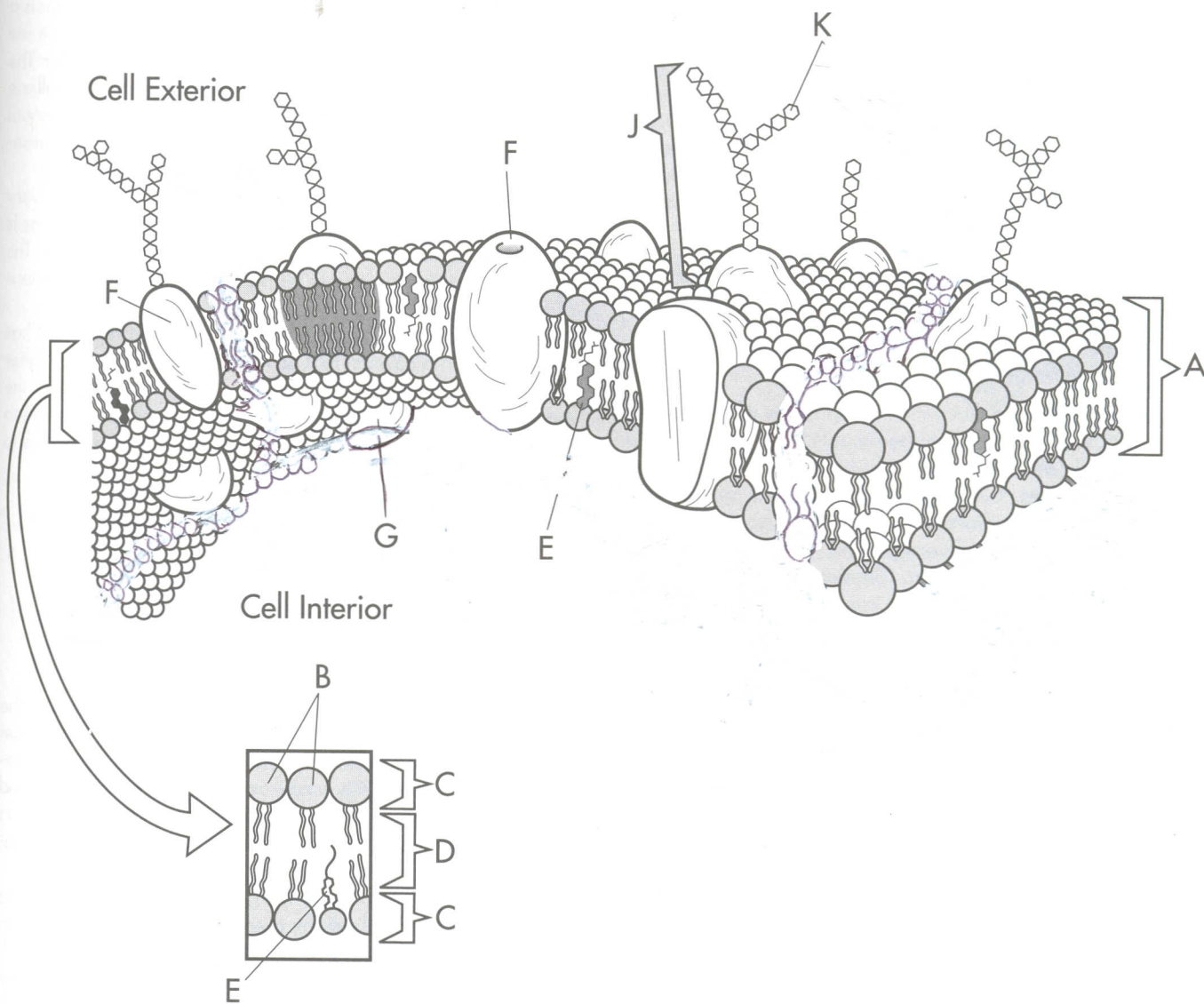


The Cell Membrane



The Cell Membrane

- Lipid BilayerA
- Phospholipids.....B
- Hydrophilic Polar HeadC
- Hydrophobic (Fatty acids) Nonpolar TailD
- Cholesterol Molecule ..E
- Channel ProteinF
- Enzyme ProteinG
- C
- Marker proteinJ
- CarbohydrateK